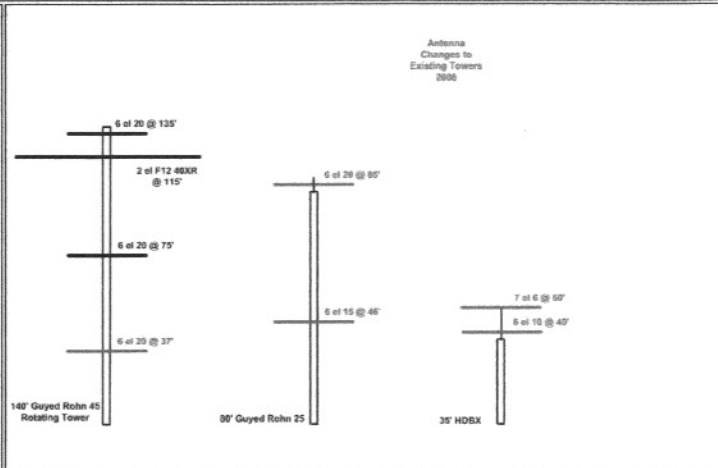
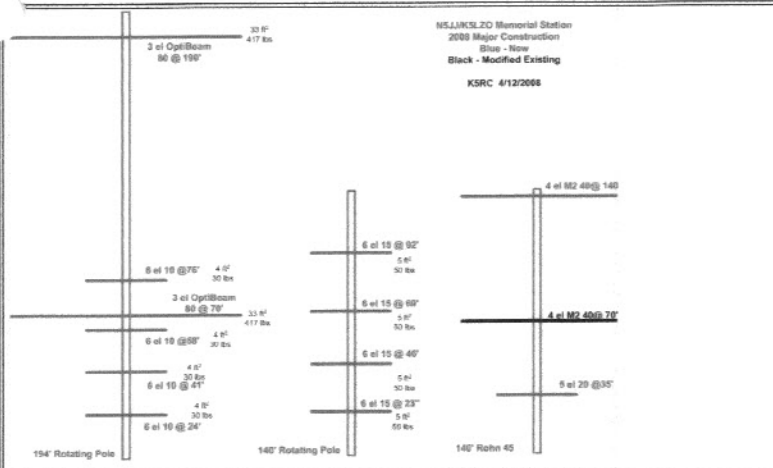


## **Exhibit 8**

### 2008 PHASE III CONSTRUCTION PLANS AND PHOTOS



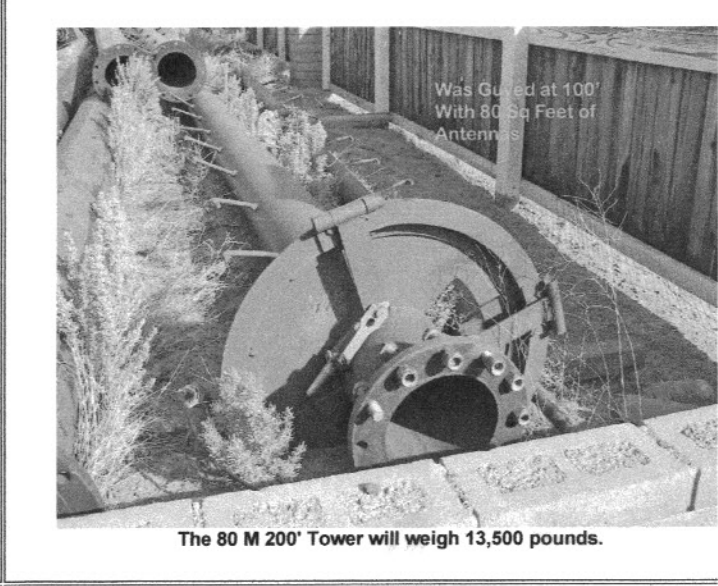
Very ambitious construction schedule includes stacked 80 M beams, a first we think

With no more need for tribanders, we are placing multiple fixed and rotati antennas for each band on different towers.



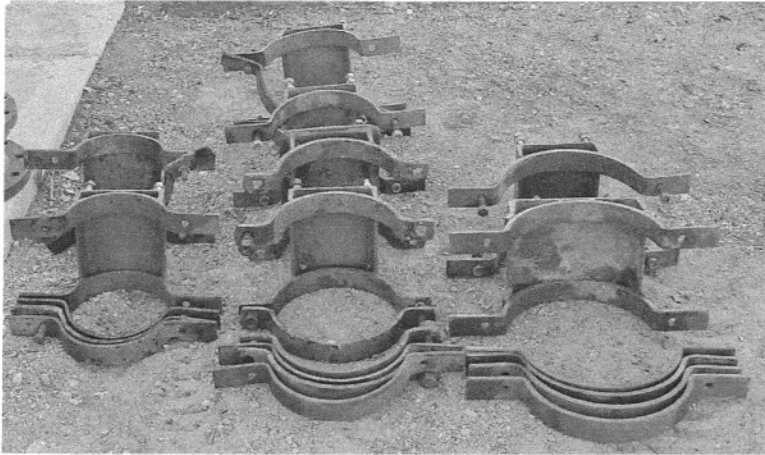
We've acquired 340' of rotating tower from W7UA

The tower rotates at the 14' level



Tower arrived at the paint shop 4/25. That is a 40' trailer.

The 80 M 200' Tower will weigh 13,500 pounds.



Brackets that hold the booms to the rotating pole



Two 3 element 80M Optibeams arrived from Germany on 5/2. Shipping weight was 1,252 lbs. Also in the pile is the second M2 4el 40.



May 21, 2008.

Someday we will get started building antennas and digging bases!

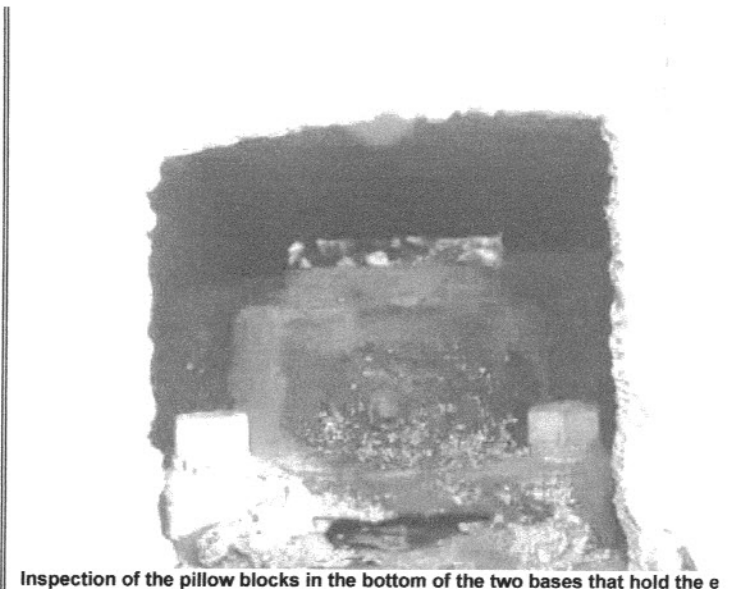


While we had a record 7 days of rain and snow in May, We took time out for CQ WPX CW

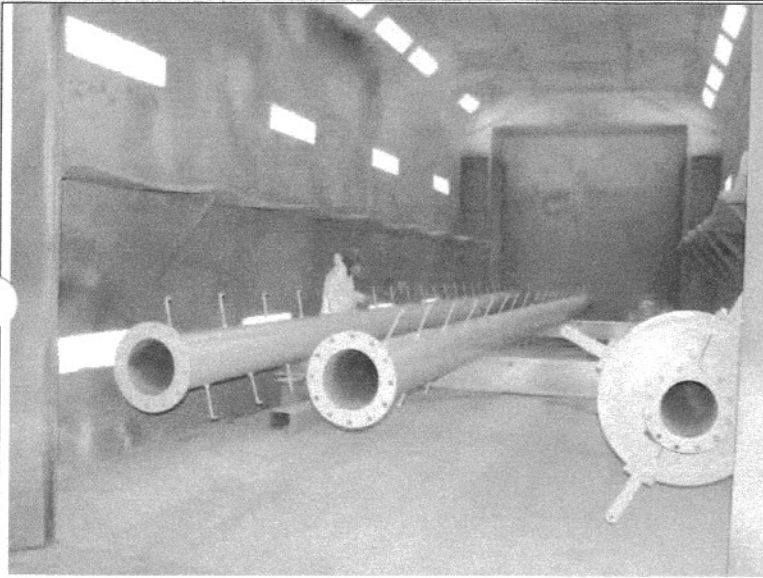
I2UIY, K6KR, N0AX, K5RC



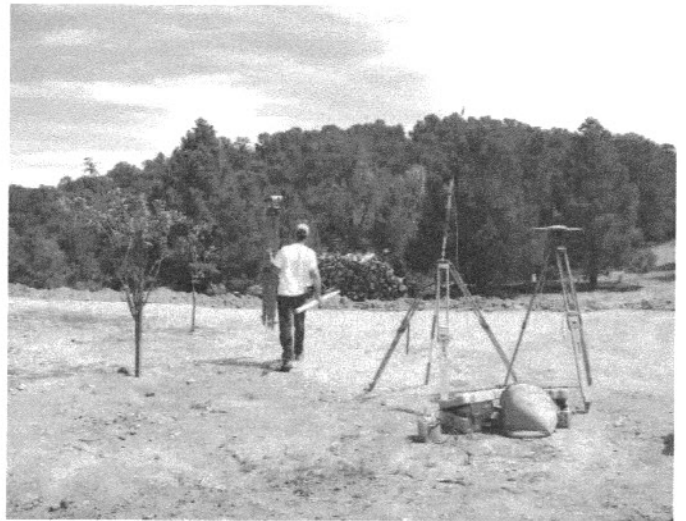
Visit the Painter on June 2



Inspection of the pillow blocks in the bottom of the two bases that hold the e weight of the tower showed they had to be replaced.



Inspect the towers being painted



Surveying tower base and guy anchor locations has gotten a lot more comp since the days of a compass and string.



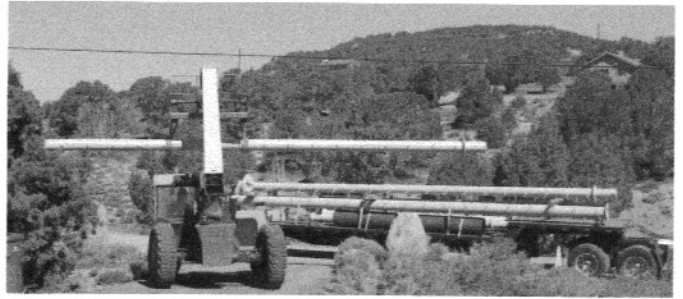
For some reason, they could not get a good GPS Lock



So they had to set up a base station and layout Cartesian coordinate marke



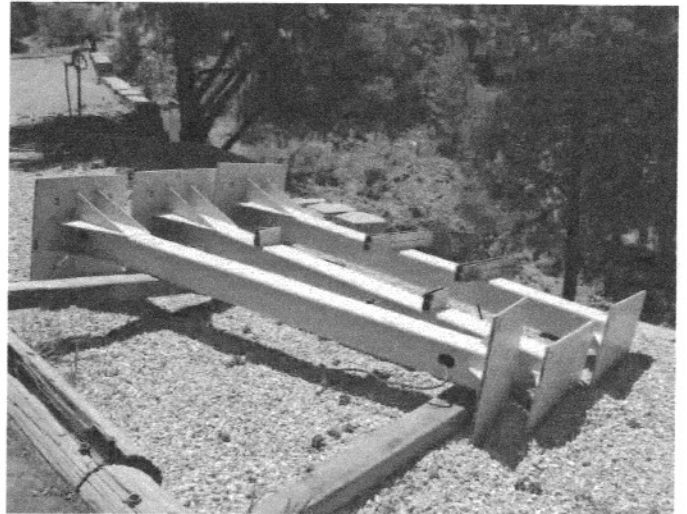
Tower is delivered on June 7. First he tried to pick up a 40' joint with the forklift blades.



When that approach did not work, he resorted to straps



The bases for the 140' and 200' rotating monopoles are 20" OD, 19" ID Pipe 7.5' long. They will be placed in a 5' hole with rebar and concrete inside and out.



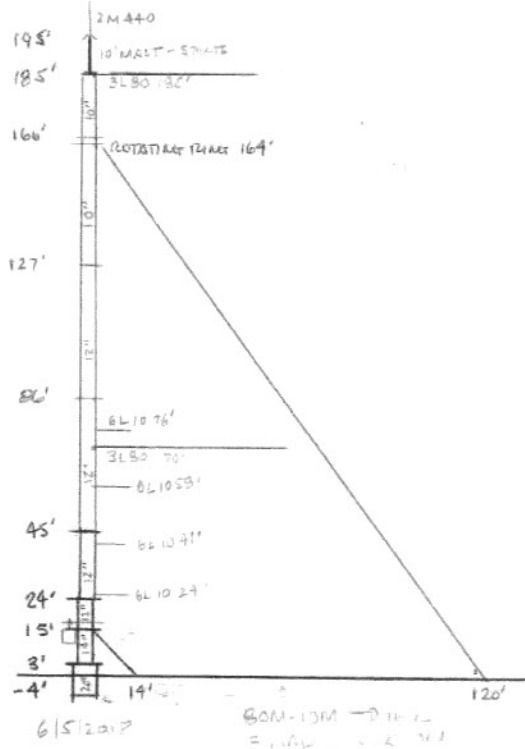
These stanchions are 8' long made of 6" Box Tubing. They will be used for electrical guy posts.



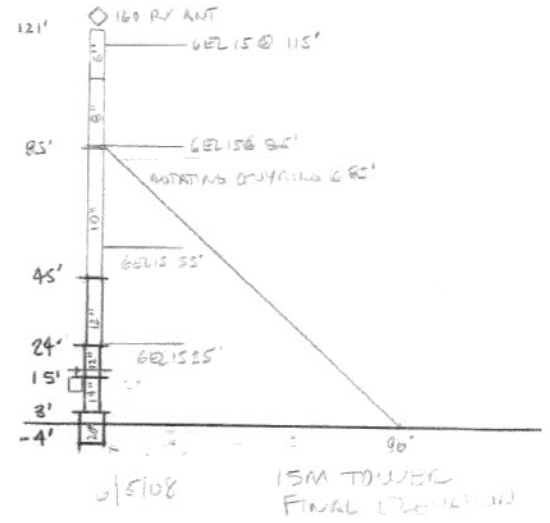
Detail of the rotating joints at the base sections



Tower unloaded and inventoried



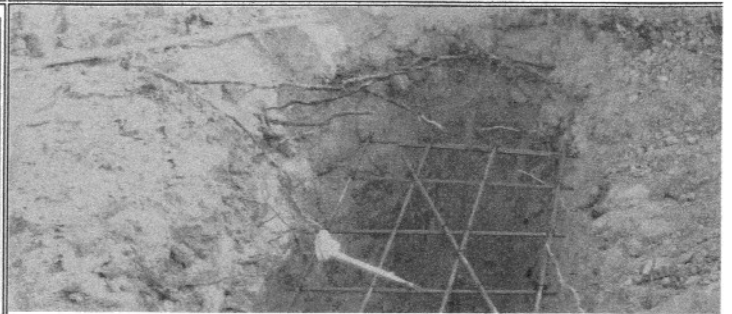
Quick calculations after taking inventory to make sure it all works - 80/10M Monopole



Quick calculations after taking inventory to make sure it all works- 15 M Monopole



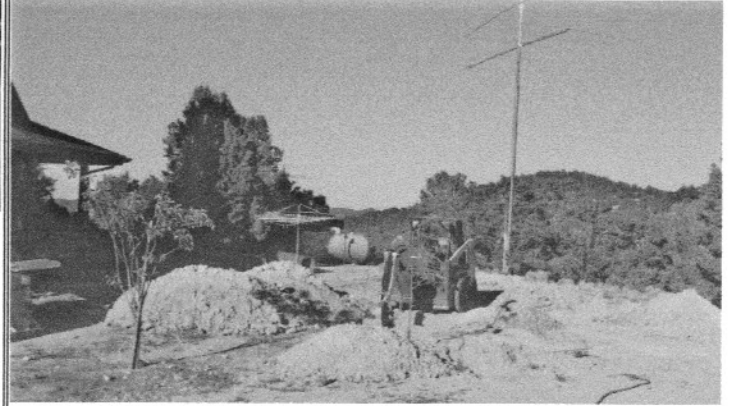
With the new problem of theft of copper these days, we are burying 4,000' of feedline



Guy anchors and tower bases are specified by a professional engineer and rebar work is being done by a structural welder. This hole is 5' x 4' x 4'.



One of the elevated guy anchors in concrete



The back yard looks like we are conducting war games instead of digging trenches and bases.

Last Update June 23, 2008