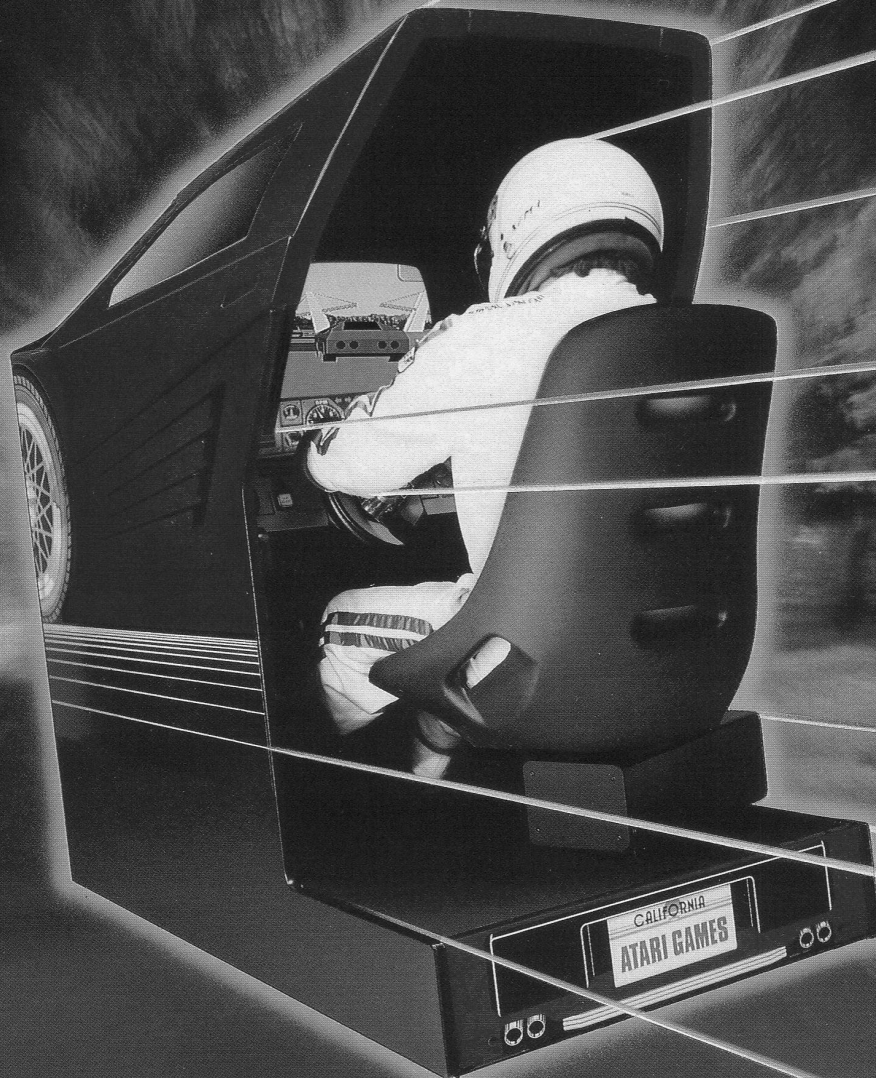


THE WORLD'S FIRST AUTHENTIC DRIVING SIMULATION GAME!



Hard Drivin'[™]

Get Behind the Wheel and Feel the Thrill!

Slide into the contoured seat and adjust it to fit the length of your arms and legs. Place your feet on the gas and clutch, try your hand on the stick shift. Select manual or automatic transmission, turn the ignition key and you're off!

Hard Drivin' might look like an arcade game but it drives like a real car. Don't just take our word for it:

Take Hard Drivin' for a test drive today!



Atari Games Corporation, 675 Sycamore Drive, P.O. Box 361110, Milpitas, CA 95035-1110 ☎ (408) 434 3700

© 1988 Atari Games Corporation. All rights reserved.

YOUR VEHICLE FOR HIGH-PERFORMANCE EARNINGS!

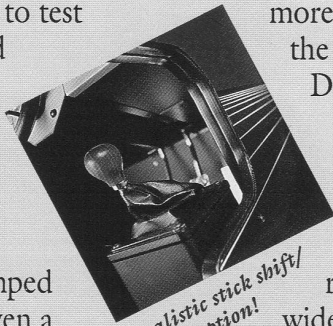


Deluxe Cockpit Dimensions:
 Width: 31 1/2 in. (81 cm.)
 Depth (seat in): 62 1/2 in. (160 cm.)
 Height: 77 in. (197 cm.)
 Weight: 750 lbs. (341 kg.)

How would you like to test drive a high-powered sports car on a stunt course? Now you have your chance, courtesy of Atari Games!

Have you ever jumped a draw bridge or driven a vertical loop? Now you can! These thrilling stunts, among others, provide the ultimate realistic driving experience.

Or, maybe high-speed driving is your type of excitement. Put the pedal to the metal and try to keep control around the corners, weaving in and out of traffic while avoiding oncoming cars. All this and



Realistic stick shift/clutch option!

more await you behind the wheel of Hard Drivin'.

Hard Drivin': It's the ride of your life. You feel the tires grip the road as you take a wide turn at high speed. The feedback steering alerts you to the smallest change in the road. You catch air as you fly the draw bridge and land on the down ramp. You are in control as the car holds the road on the vertical loop...

Test the limits of our car and your skill with no risk of personal injury, and follow a course that does not exist anywhere in the real world.

Hard Drivin' is equipped with

- center-feel steering with continuous force feedback
- adjustable swivel seat
- gas, brake and clutch pedals
- four-speed stick shift
- higher-resolution monitor
- instant replay of crash sequences
- championship "grudge" match.



Adjustable swivel seat!

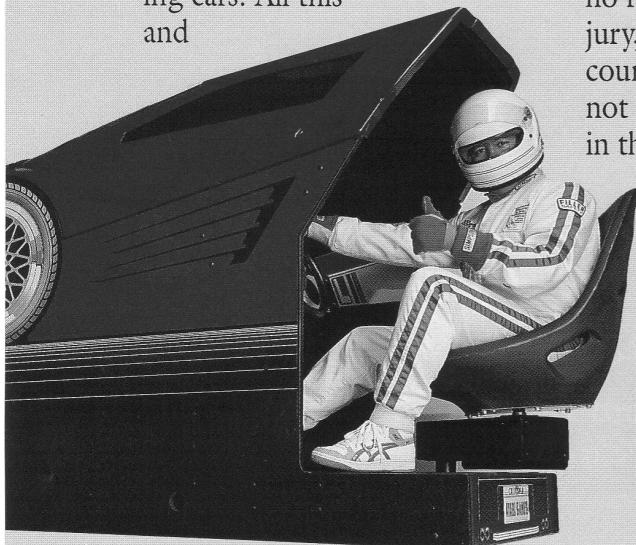
After-market options include

- dollar bill acceptor
- overhead display assembly.

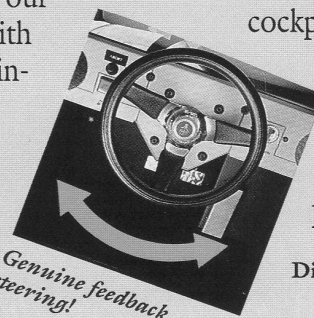
Compact sitdown model will follow the introduction of the deluxe cockpit version depicted herein.

Shift your R.O.I. into high gear with Hard Drivin'!

Distributed By:

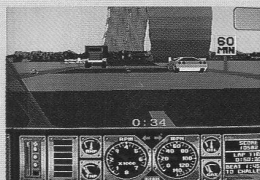


Compact sitdown model will follow.



Genuine feedback steering!

Designed and Developed in the U.S.A.



Exciting stunt track with a 360-degree loop!



A true three-dimensional world presented on the screen!



Qualify and challenge the top Hard Driver!